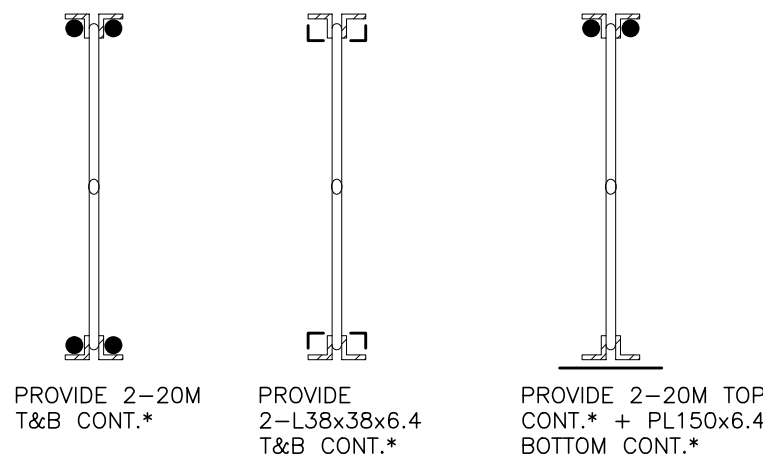


OPTION #1 OPTION #2 OPTION #3



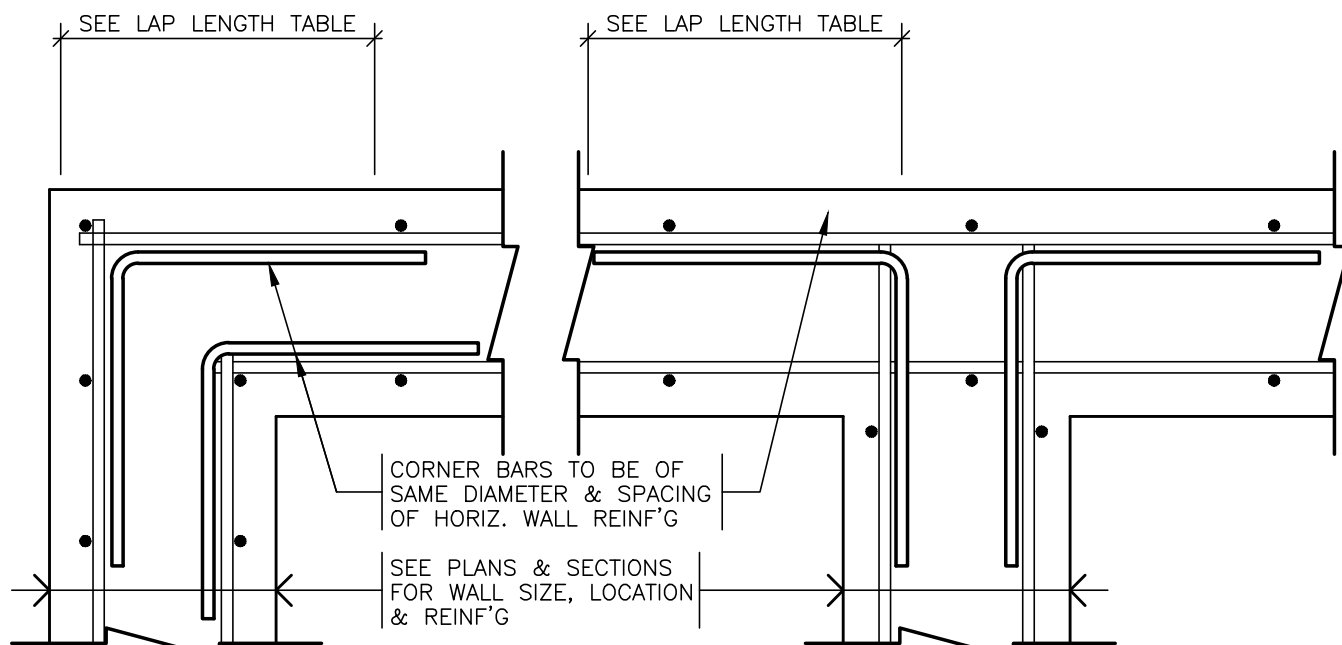
NOTES:

1. THE CONTRACTOR IS TO REVIEW SITE CONDITIONS TO DETERMINE WHICH OPTION IS THE MOST APPROPRIATE PER OWSJ. REINFORCING DETAILING SHALL BE PROVIDED FOR MIDDLE 80% OF SPAN LENGTH U/N.
2. IT IS THE RESPONSIBILITY OF THE CONTRACTOR/ INSTALLER TO REVIEW AND INSPECT SITE CONDITIONS FOR ANY INTERFERENCES THAT WOULD PREVENT THE COMPLETION OF STRUCTURAL WORK. ANY INTERFERENCES, WHETHER IT BE MECH'L, ELEC'L, ARCH'L, ETC. ARE TO BE REMOVED, THEN REINSTATED ONCE STRUCTURAL WORK IS COMPLETE.
3. PROVIDE A MINIMUM 6mm WELD x 50mm LONG @ 300 o/c AND AT EACH END OF REINFORCEMENT.
4. STAMPED SHOP DRAWINGS ARE TO BE PROVIDED TO CUNLIFFE & ASSOCIATES FOR REVIEW.

* WHERE OWSJ WEB MEMBERS OBSTRUCT REINFORCEMENT CONTINUITY, REINFORCEMENT IS TO BE WELDED SOLID AT EACH SIDE OF OBSTRUCTION TO RESTORE FULL STRENGTH AND CONTINUITY OF REINFORCEMENT.

TYPICAL REINFORCEMENT DETAIL (R1)

(JOIST SECTION AND ELEVATION IS USED AS A REPRESENTATION ONLY)



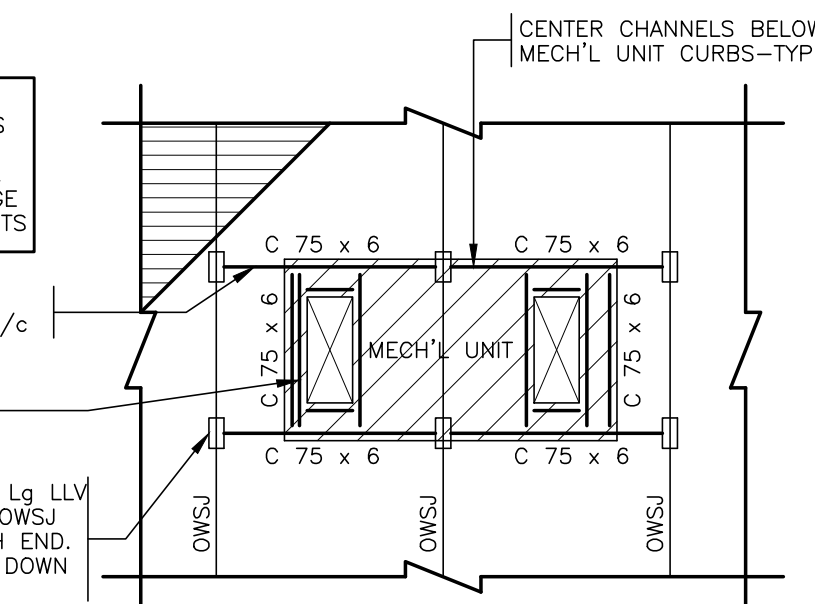
TYPICAL WALL/BEAM INTERSECTION REINFORCEMENT

NOTE:
INDIVIDUAL ROOF OPENINGS ARE TO BE CREATED FOR SUPPLY & RETURN DUCTS. DO NOT CREATE ONE LARGE OPENING TO COMBINE DUCTS

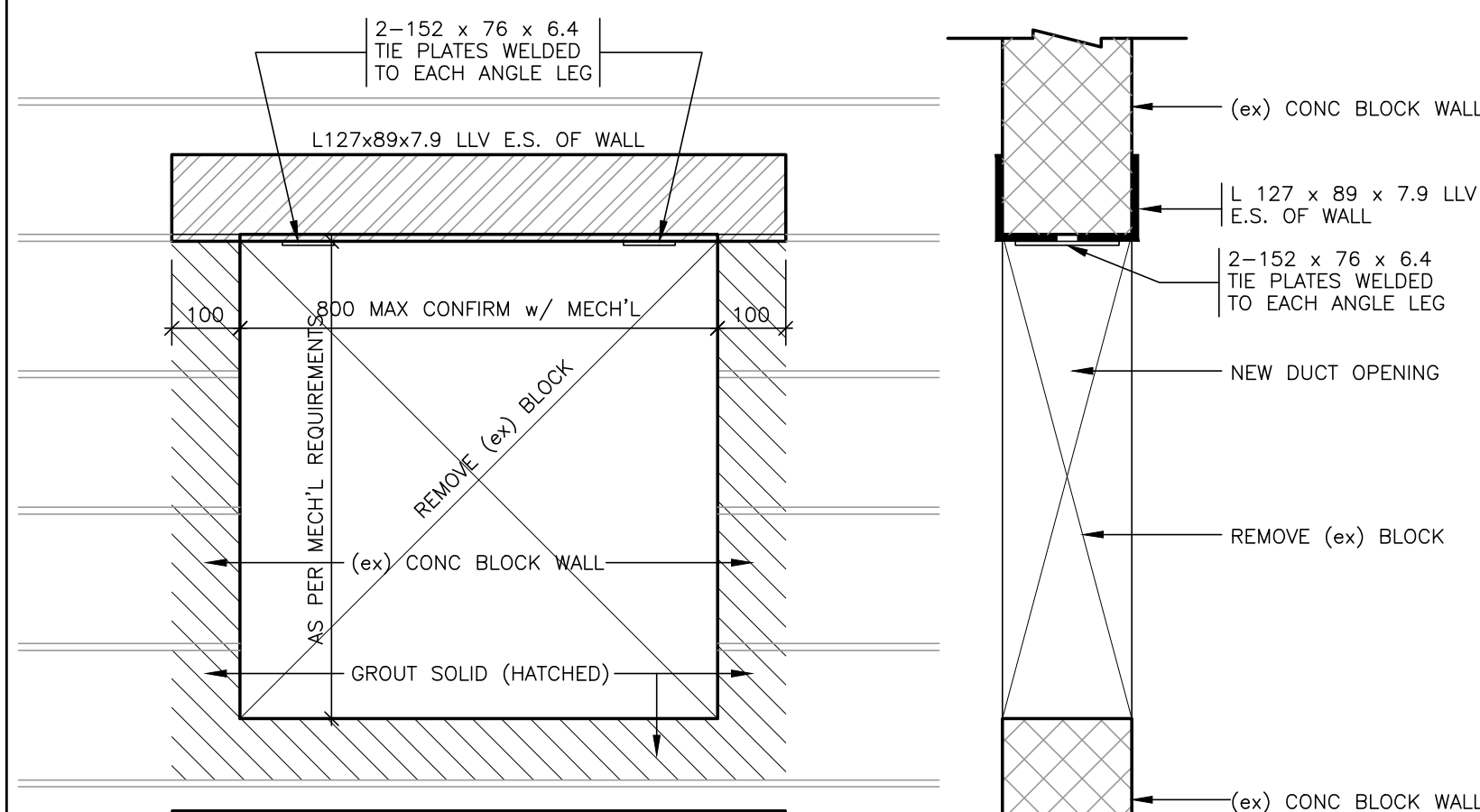
FASTEN ALL DOWN FLUTES CHANNEL BELOW @ 150 o/c

L 76 x 76 x 6.4 TYP ALL AROUND MECH'L OPENINGS

L 127 x 76 x 6.4 x 150 Lg LLV ANGLE SEAT BEARING ON OWSJ TOP CHORD TYPICAL EACH END. SLOT HORIZ LEG @ DECK DOWN FLUTES



TYPICAL DETAIL- ADDITIONAL FRAMING AT ROOFTOP MECH'L UNITS
(WITH UNIT OPENINGS THROUGH ROOF)

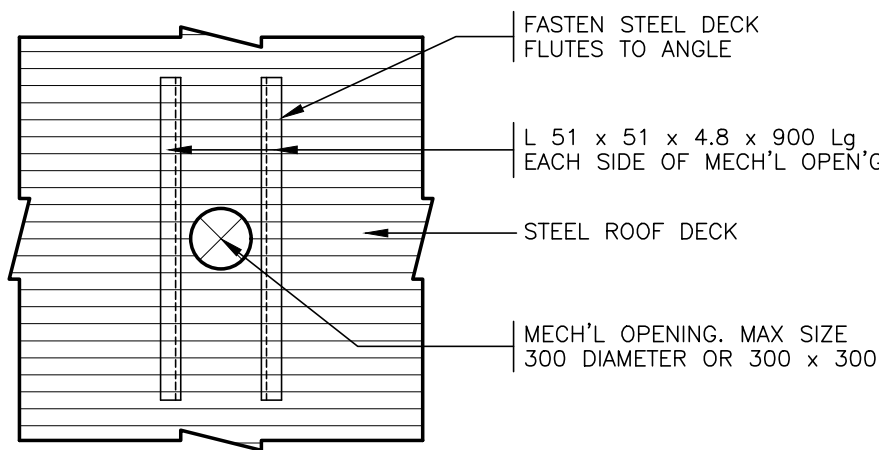


- SEQUENCE
1. DETERMINE WIDTH OF OPENING
 2. REMOVE (ex) MORTAR FROM (ex) BLOCK JOINT ABOVE OPENING (1 SIDE OF WALL)
 3. INSERT NEW ANGLE ABOVE OPENING.
 4. REPEAT STEPS 2 & 3 ON OPPOSITE SIDE OF WALL.
 5. REMOVE BLOCK TO CREATE OPENING
 6. WELD TIE PLATES TO EACH END OF EACH ANGLE.
 7. GROUT (ex) JAMB & SILL BLOCKS SOLID

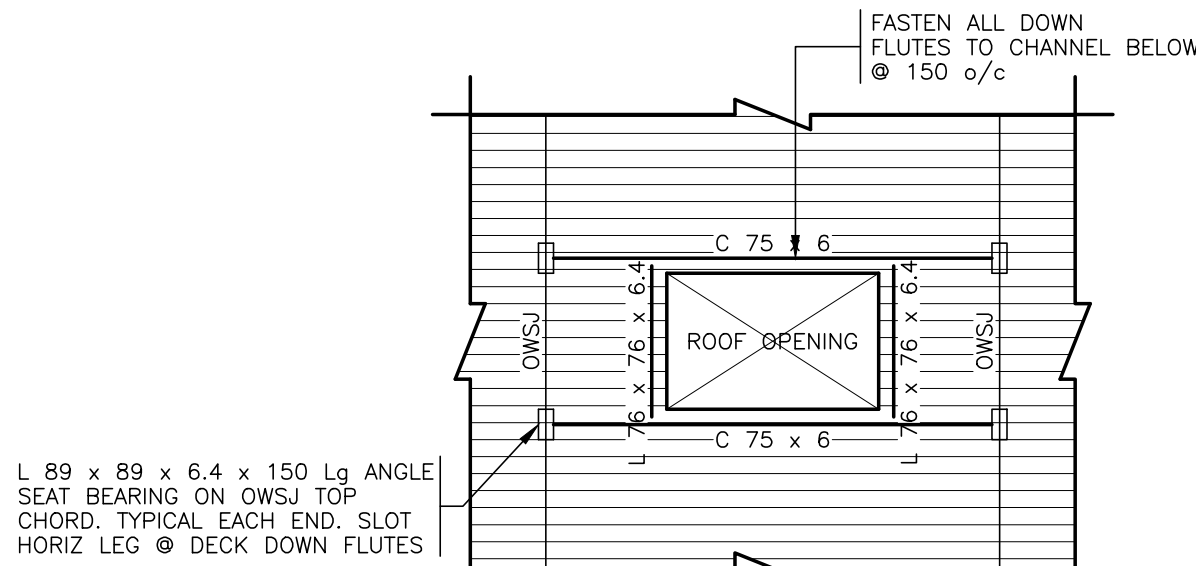
ELEVATION

NEW ANGLE LINTEL OVER NEW OPENINGS THROUGH EXISTING CONC BLOCK WALLS

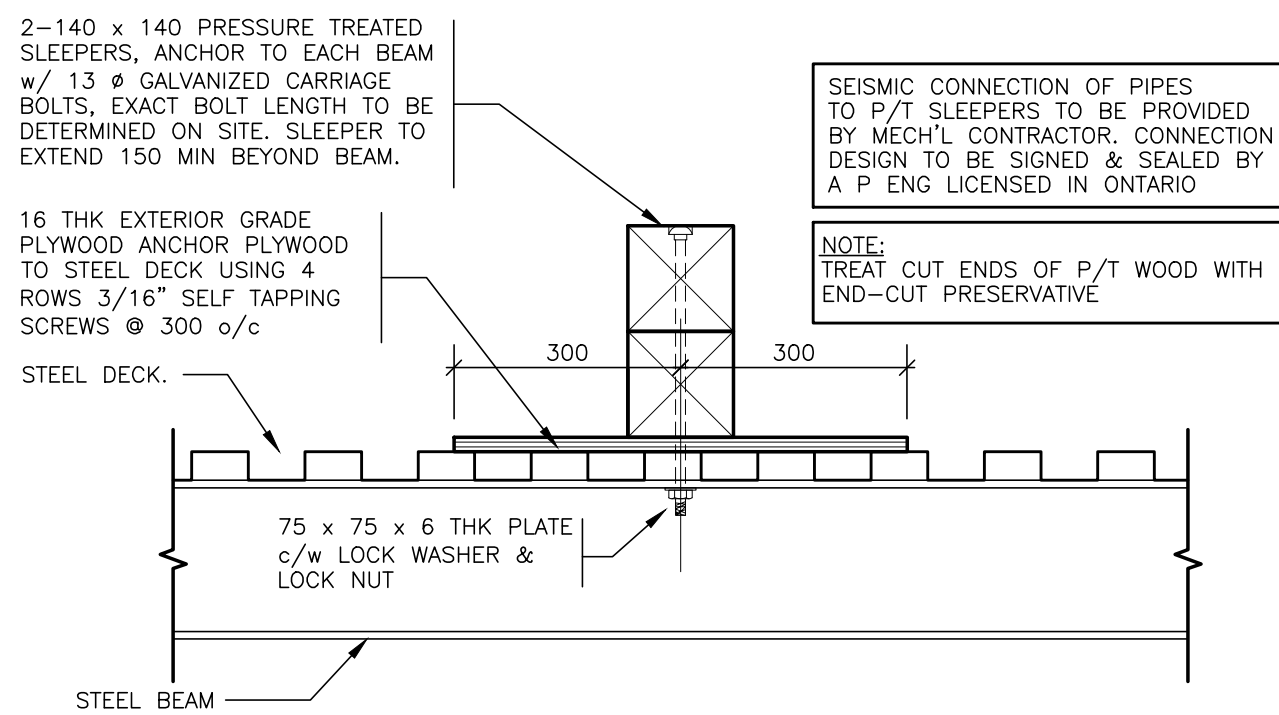
PROVIDE SOLID WELD AT EACH SIDE OF OBSTRUCTION TO RESTORE FULL STRENGTH AND CONTINUITY OF REINFORCEMENT.



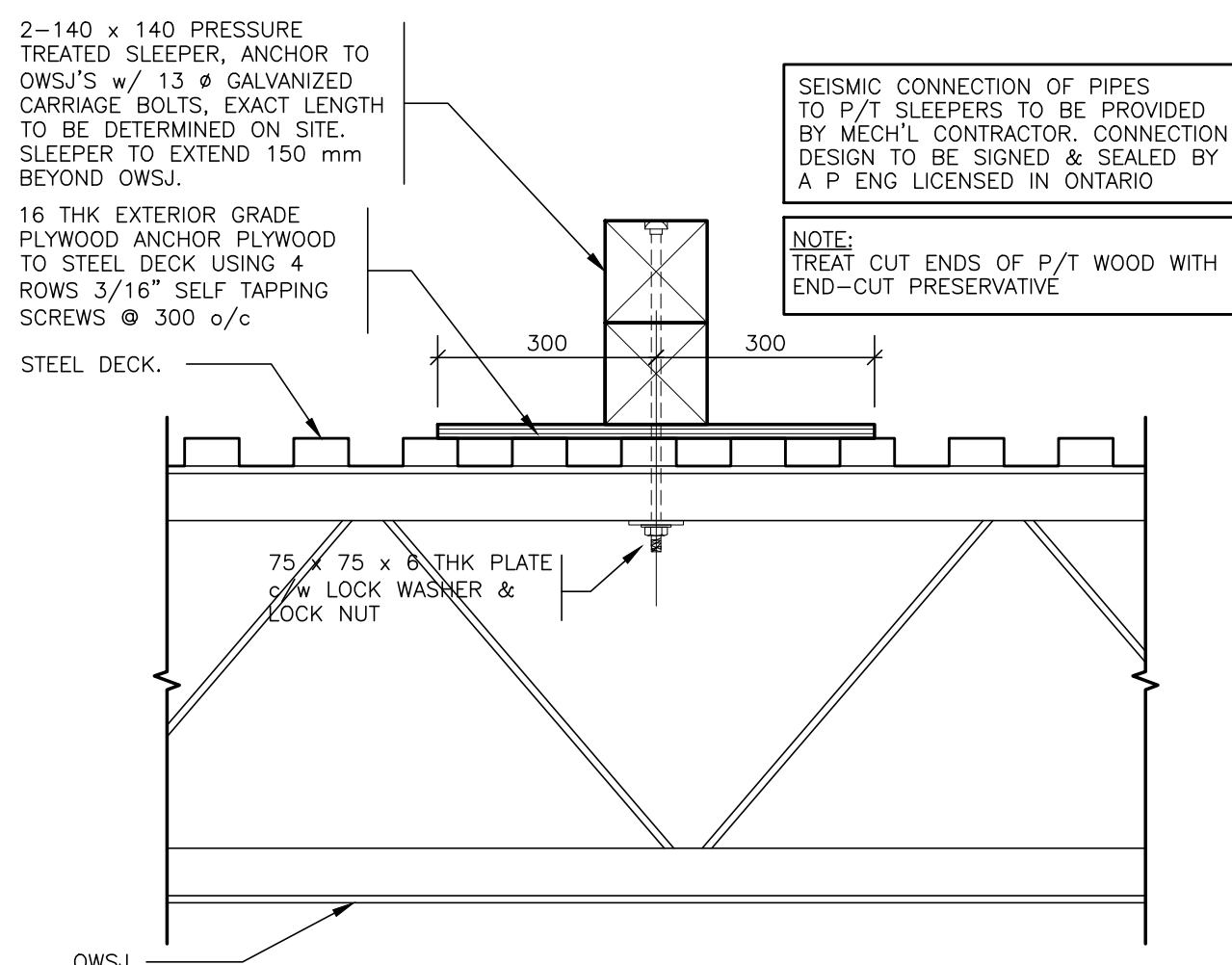
PLAN DETAIL-MECHANICAL OPENINGS



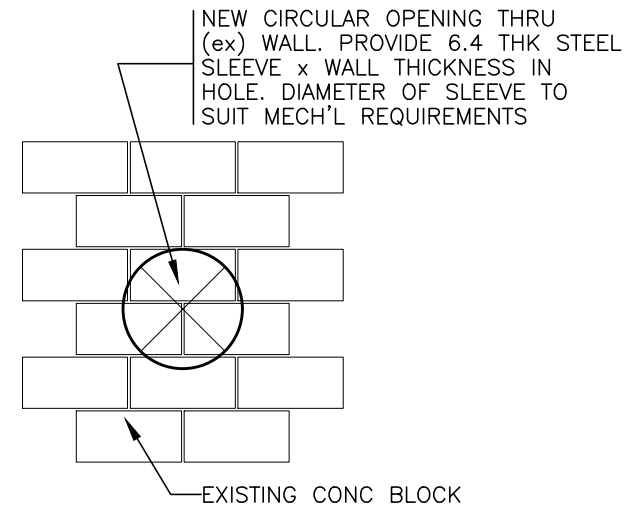
TYPICAL DETAIL- ADDITIONAL FRAMING AT ROOF OPENINGS



DETAIL-WOOD SLEEPERS SUPPORTS AT NEW ROOF TOP PIPE SUPPORT LOCATIONS PERPENDICULAR TO BEAM
COORDINATE EXACT LOCATIONS & SPACING WITH MECH'L

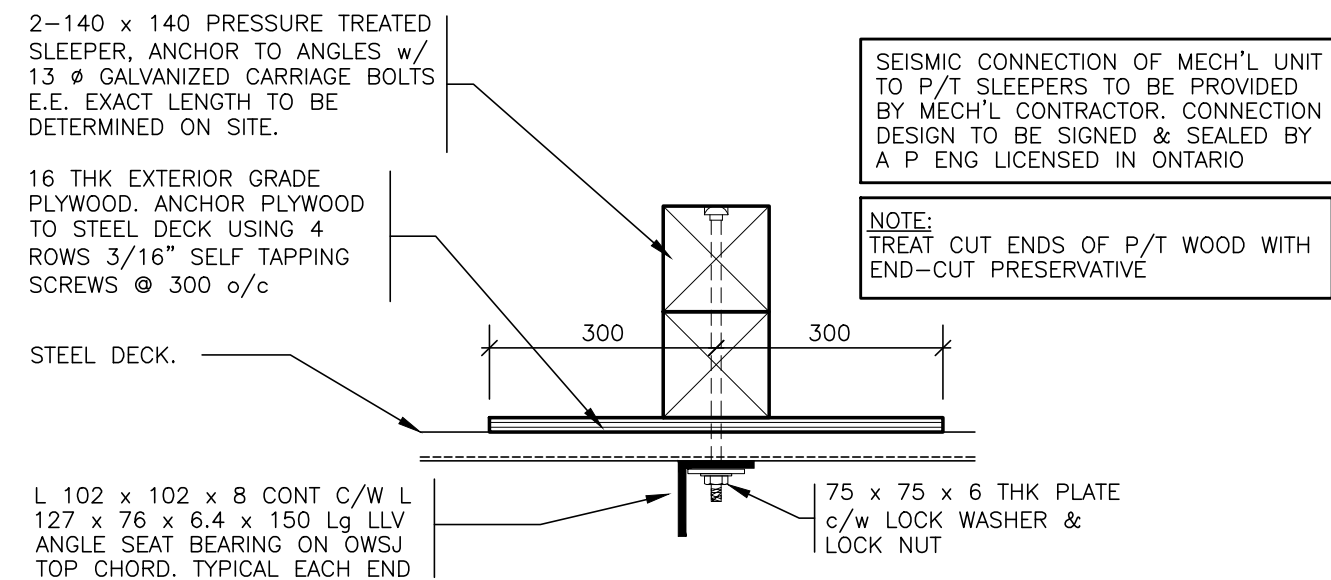


DETAIL-WOOD SLEEPER SUPPORTS AT ROOF TOP PIPE SUPPORT LOCATIONS
COORDINATE LOCATIONS & SPACING WITH MECH'L

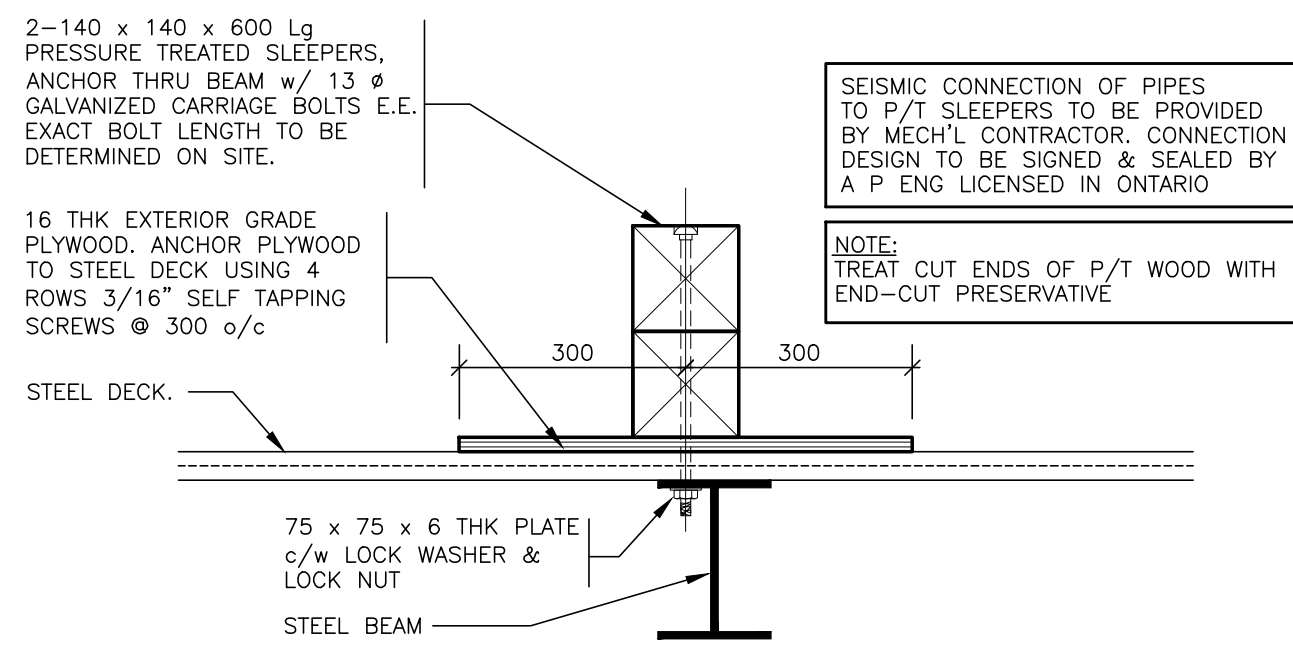


NEW ROUND WALL OPENINGS THRU EXISTING CONC BLOCK WALL

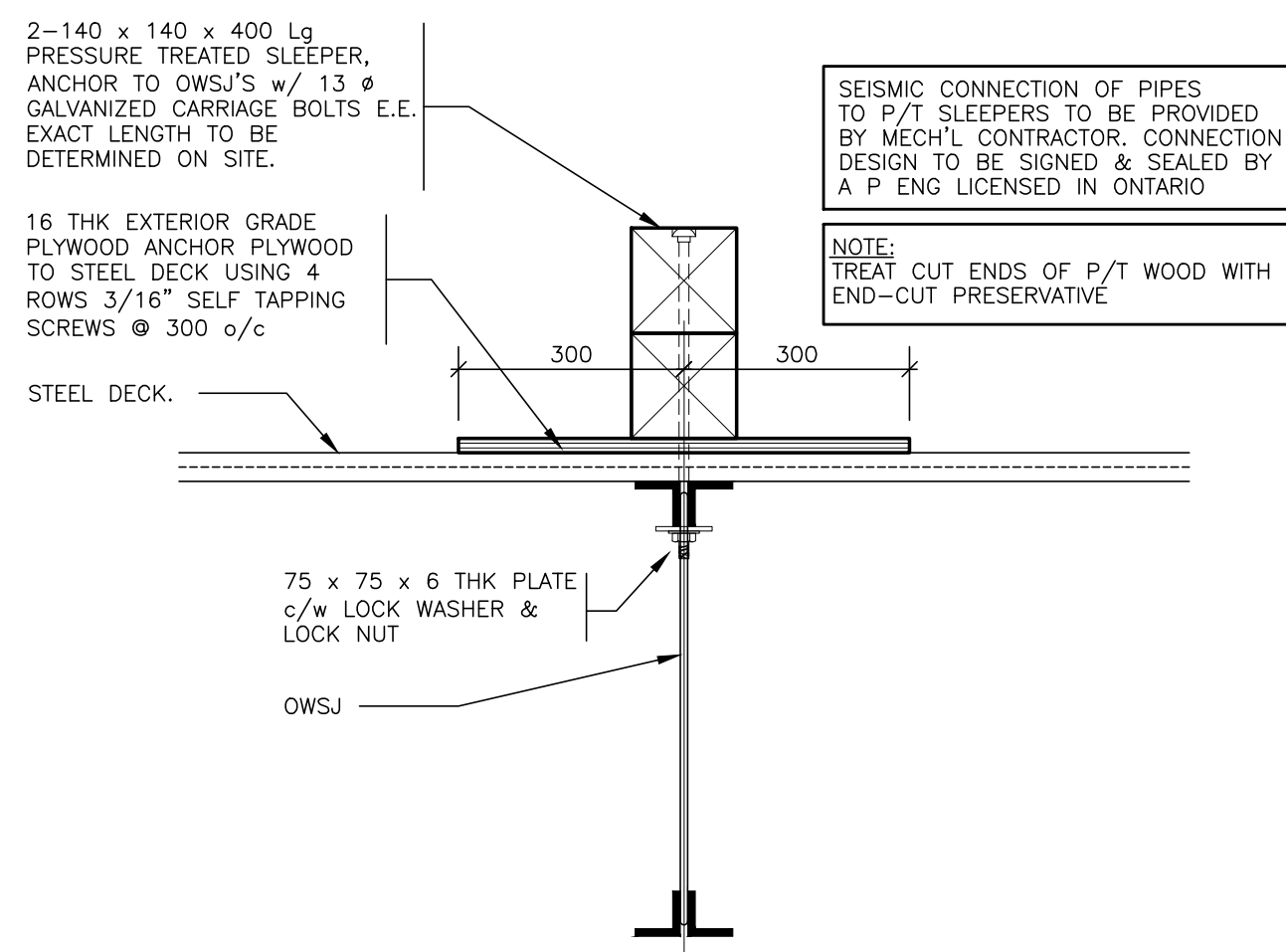
SEE MECH. FOR LOCATION & SIZE OF OPENINGS
APPLICABLE TO NEW OPENINGS LARGER THAN 300 mm DIAMETER
HOLES SMALLER THAN 300 mm DIAMETER MAY BE CREATED WITH NO ADDITIONAL SUPPORT FRAMING



DETAIL-WOOD SLEEPERS SUPPORTS AT NEW ROOF TOP PIPE SUPPORT LOCATIONS
COORDINATE LOCATIONS & SPACING WITH MECH'L



DETAIL-WOOD SLEEPERS SUPPORTS AT NEW ROOF TOP PIPE SUPPORT LOCATIONS PARALLEL TO BEAM
COORDINATE EXACT LOCATIONS & SPACING WITH MECH'L REQUIREMENTS



DETAIL-WOOD SLEEPER SUPPORTS AT ROOF TOP PIPE SUPPORT LOCATIONS
COORDINATE LOCATIONS & SPACING WITH MECH'L REQUIREMENTS

3	ISSUED FOR BUILDING PERMIT & TENDER	APR 10/26
2	ISSUED FOR 95% REVIEW	MAR 27/26
1	ISSUE FOR 66% REVIEW	MAR 6/26
No.	Revision Description	Date

1. THE CONTRACTOR IS RESPONSIBLE FOR CHECKING AND VERIFYING ALL DIMENSIONS. ANY DISCREPANCY SHALL BE REPORTED TO THE ENGINEER.
2. THIS DRAWING IS TO BE READ IN CONJUNCTION WITH ALL MATERIAL RELEVANT TO THE PROJECT.
3. ADDITIONAL INFORMATION MAY BE ISSUED FOR CLARIFICATION TO ASSIST PROPER EXECUTION OF WORK. SUCH DRAWINGS WILL HAVE THE SAME MEANING AND INTENT AS IF THEY WERE INCLUDED WITH THE DRAWINGS IN THE CONTRACT DOCUMENT.
4. DO NOT SCALE DRAWINGS

PROJECT
SOUTH GRENVILLE DHS
RAAC & RENOVATIONS

1000 Edward St N, Prescott, ON K0E 1T0

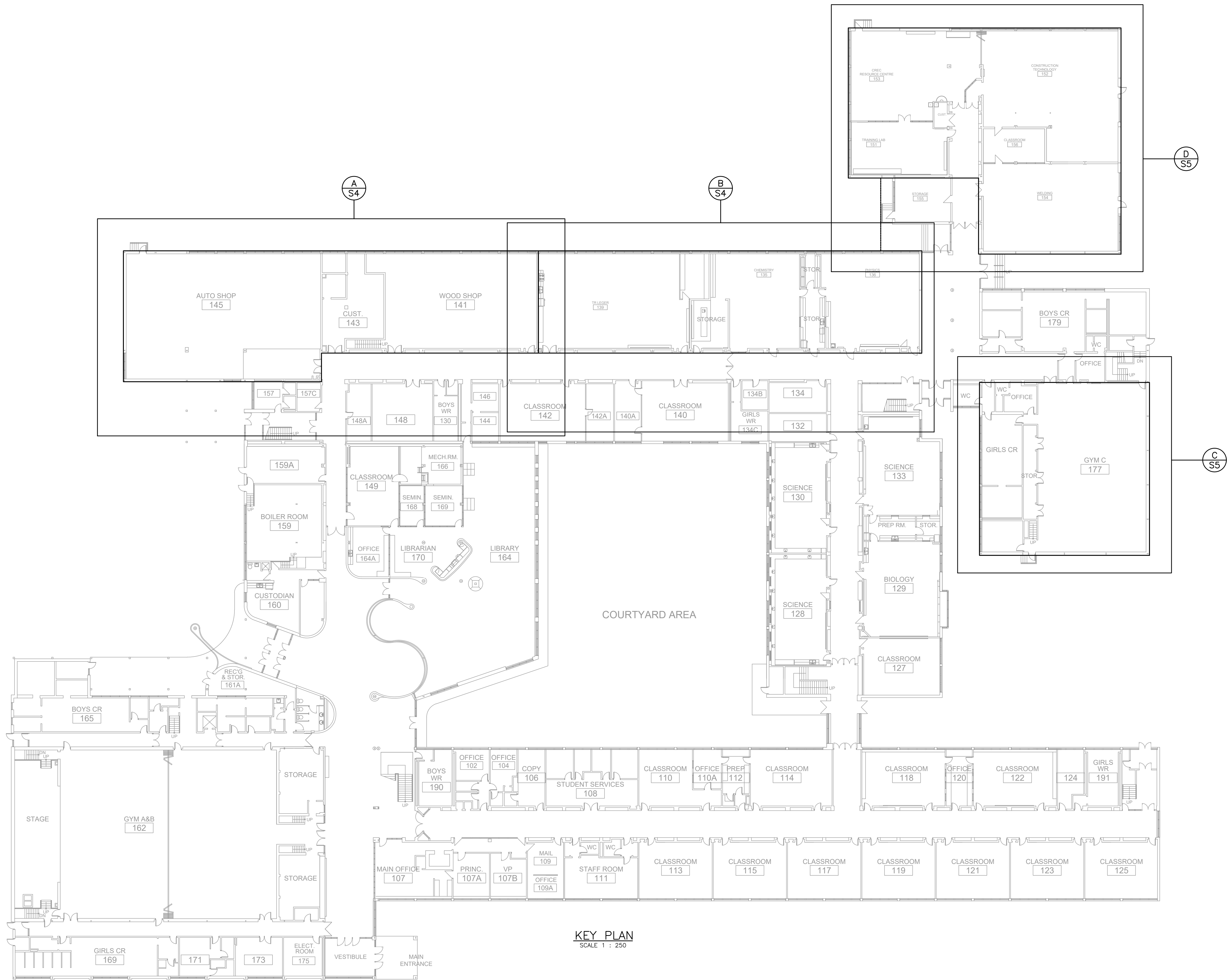
ARCHITECT
N45 ARCHITECTURE INC

DRAWING TITLE
TYPICAL DETAILS

DRAWN RW	REVIEWED DH	SCALE AS NOTED
-------------	----------------	-------------------

ENGINEERS SEAL	PROJECT No. 25-211
----------------	-----------------------

SHEET No. S2



KEY PLAN
SCALE 1 : 250

EDWARD STREET

3	ISSUED FOR BUILDING PERMIT & TENDER	APR 10/26
2	ISSUED FOR 95% REVIEW	MAR 27/26
1	ISSUE FOR 66% REVIEW	MAR 6/26
No.	Revision Description	Date

1. THE CONTRACTOR IS RESPONSIBLE FOR CHECKING AND VERIFYING ALL DIMENSIONS. ANY DISCREPANCY SHALL BE REPORTED TO THE ENGINEER.
2. THIS DRAWING IS TO BE READ IN CONJUNCTION WITH ALL MATERIAL RELEVANT TO THE PROJECT.
3. ADDITIONAL INFORMATION MAY BE ISSUED FOR CLARIFICATION TO ASSIST PROPER EXECUTION OF WORK. SUCH DRAWINGS WILL HAVE THE SAME MEANING AND INTENT AS IF THEY WERE INCLUDED WITH THE DRAWINGS IN THE CONTRACT DOCUMENT.
4. DO NOT SCALE DRAWINGS

 **CUNLIFFE & ASSOCIATES**
CONSULTING STRUCTURAL ENGINEERS
200-1550 CARLING AVE
OTTAWA, ONTARIO
CANADA K1Z 8S8
T: 613-723-7242
F: 613-728-1461
E: cunliffe@cunliffe.ca
W: www.cunliffe.ca

PROJECT
**SOUTH GRENVILLE DHS
RAAC & RENOVATIONS**

1000 Edward St N, Prescott, ON K0E 1T0

ARCHITECT
N45 ARCHITECTURE INC

DRAWING TITLE
**KEY PLAN
ROOF REPLACEMENT**

DRAWN RW	REVIEWED DH	SCALE AS NOTED
-------------	----------------	-------------------

ENGINEERS SEAL 25-211	PROJECT No. 25-211
	SHEET No.



S3

[illegible]

L1
L102x102x6.4 (±140 kN) PROVIDE 2 DECK FASTENERS @
EACH DOWN FLUTE CROSSING LOCATION TO ANGLE

L2
L102x102x6.4 (±140 kN) FASTEN STEEL DECK TO ANGLE
USING 2 DECK FASTENERS @ 150 o/c

NOTES:

1. REFER TO DWG S2 FOR ADDITIONAL FRAMING BELOW MECH'L UNIT & AT ROOF OPENINGS
2. COORDINATE MECH'L UNIT OPENINGS WITH MECH'L ENGINEER
3. NOTIFY CUNLIFFE & ASSOCIATES IF ANY OF THE MECH'L UNIT INFORMATION NOTED ON THIS DRAWING DIFFERS FROM THE ACTUAL UNITS SUPPLIED FOR INSTALLATION.
4. REFER TO DWG S2 FOR EXISTING OWSJ REINFORCEMENT DETAILS AT MECH'L UNITS

Diagram illustrating the snow concentration measurement setup. A rectangular block labeled "RTU-1 & 9" is shown. A wedge-shaped snow concentration is placed on top of the block. The snow concentration is labeled "SNOW CONCENTRATION" and has a height of "2.48 MPa" and a width of "4.1 MPa". A dashed circle around the block is labeled "2200" and "ALL AROUND".


 PART PLAN
 1 : 100

SEE PART PLAN A FOR CONTINUATION

[illegible]


 PART PLAN
 1 : 100

[illegible]

3	ISSUED FOR BUILDING PERMIT & TENDER	APR 10/26
2	ISSUED FOR 95% REVIEW	MAR 27/26
1	ISSUE FOR 66% REVIEW	MAR 6/26
No.	Revision Description	Date

1. THE CONTRACTOR IS RESPONSIBLE FOR CHECKING AND VERIFYING ALL DIMENSIONS, ANY DISCREPANCY SHALL BE REPORTED TO THE ENGINEER.
2. THIS DRAWING IS TO BE READ IN CONJUNCTION WITH ALL MATERIAL RELEVANT TO THE PROJECT.
3. ADDITIONAL INFORMATION MAY BE ISSUED FOR CLARIFICATION TO ASSIST PROPER EXECUTION OF WORK, SUCH DRAWINGS WILL HAVE THE SAME MEANING AND INTENT AS IF THEY WERE INCLUDED WITH THE DRAWINGS IN THE CONTRACT DOCUMENT.
4. DO NOT SCALE DRAWINGS



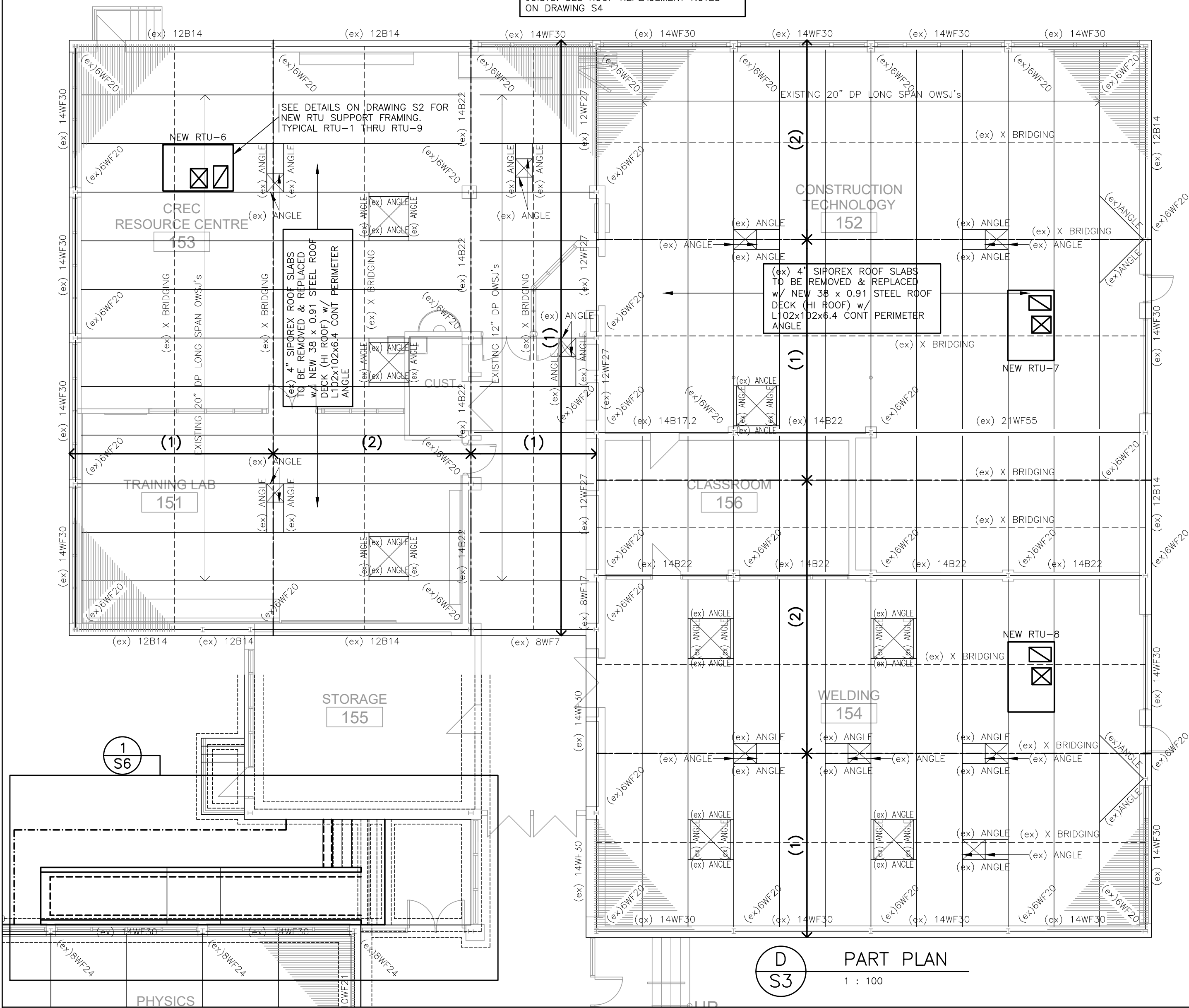
IN TO ARCHITECTURE INC

DRAWING TITLE

PART FLOOR PLANS
ROOF REPLACEMENT

DRAWN	REVIEWED	SCALE
RW	DH	AS NOTED
ENGINEERS SEAL		PROJECT No.
		25-211
		SHEET No.
		S4

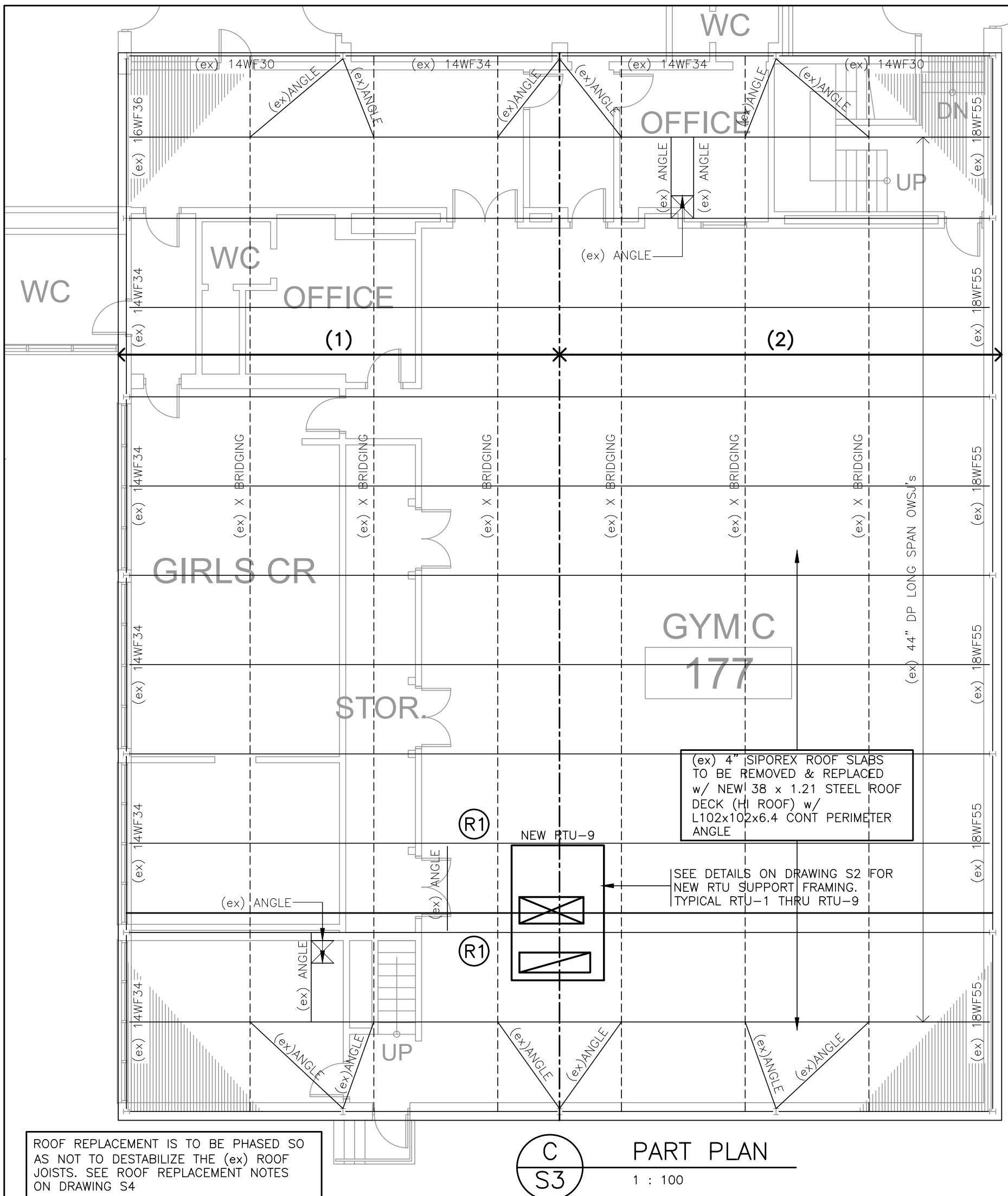
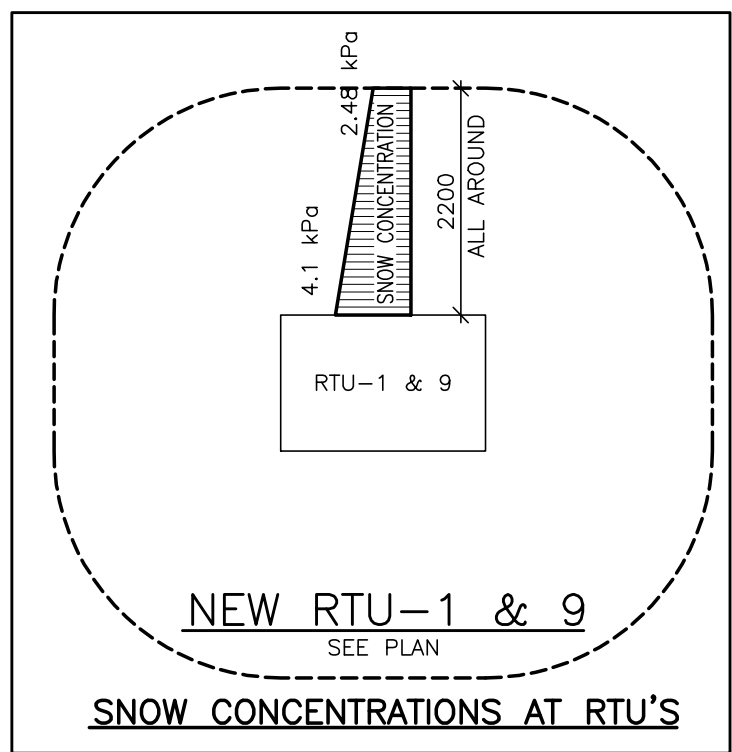
ROOF REPLACEMENT IS TO BE PHASED SO AS NOT TO DESTABILIZE THE (ex) ROOF JOISTS. SEE ROOF REPLACEMENT NOTES ON DRAWING S4



ROOF TOP MECH'L UNITS

NOTES:

1. REFER TO DWG S2 FOR ADDITIONAL FRAMING BELOW MECH'L UNITS & AT ROOF OPENINGS
2. COORDINATE MECH'L UNIT OPENINGS WITH MECH'L ENGINEER
3. NOTIFY CUNLIFFE & ASSOCIATES IF ANY OF THE MECH'L UNIT INFORMATION NOTED ON THIS DRAWING DIFFERS FROM THE ACTUAL UNITS SUPPLIED FOR INSTALLATION.
4. REFER TO DWG S2 FOR EXISTING OWSJ REINFORCEMENT DETAILS AT MECH'L UNITS



ROOF REPLACEMENT IS TO BE PHASED SO AS NOT TO DESTABILIZE THE (ex) ROOF JOISTS. SEE ROOF REPLACEMENT NOTES ON DRAWING S4

3	ISSUED FOR BUILDING PERMIT & TENDER	APR 10/26
2	ISSUED FOR 95% REVIEW	MAR 27/26
1	ISSUE FOR 66% REVIEW	MAR 6/26

No.	Revision Description	Date
1	THE CONTRACTOR IS RESPONSIBLE FOR CHECKING AND VERIFYING ALL DIMENSIONS. ANY DISCREPANCY SHALL BE REPORTED TO THE ENGINEER.	
2	THIS DRAWING IS TO BE READ IN CONJUNCTION WITH ALL MATERIAL RELEVANT TO THE PROJECT.	
3	ADDITIONAL INFORMATION MAY BE ISSUED FOR CLARIFICATION TO ASSIST PROPER EXECUTION OF WORK. SUCH DRAWINGS WILL HAVE THE SAME MEANING AND INTENT AS IF THEY WERE INCLUDED WITH THE DRAWINGS IN THE CONTRACT DOCUMENT.	
4	DO NOT SCALE DRAWINGS	

CUNLIFFE & ASSOCIATES
CONSULTING STRUCTURAL ENGINEERS
200-1550 CARLING AVE
OTTAWA, ONTARIO
CANADA K1Z 8S8
T: 613-729-7242
F: 613-728-1461
E: cunliffe@cunliffe.ca
W: www.cunliffe.ca

PROJECT
**SOUTH GRENVILLE DHS
RAAC & RENOVATIONS**
1000 Edward St N, Prescott, ON K0E 1T0

ARCHITECT
N45 ARCHITECTURE INC

DRAWING TITLE
**PART FLOOR PLANS
ROOF REPLACEMENT**

DRAWN	REVIEWED	SCALE
RW	DH	AS NOTED
ENGINEERS SEAL		PROJECT No.
		25-211
		SHEET No.



S5

